

UltraSlide 3600B Surgical Table



*The New Standard for Full Function
Top Slide Imaging, Lift & Articulation Power*

Advancing the Leadership in Top Slide Surgical Table Design

The UltraSlide 3600B represents the visionary benchmark in Top Slide surgical table design, including even greater imaging versatility, lift and articulation power. Expanded features provide optimal patient positioning and C-arm access with 23" Top Slide, 1,000 lb. lift, 800 lb. articulation and full table functions. Additional features include removable back and leg sections, Auto Beach Chair position, 30° tilt, Trendelenburg and reverse Trendelenburg, and more! Optional Infrared (IR) Wireless Table Control is also available.



From ease of set-up to the reduced need for multiple support accessories (along with expanded 23" Top Slide and Heavy Duty Weight Capacity) the UltraSlide 3600B does it all!



Optional table base sensors (4) permit Infrared (IR) Wireless Table Control from anywhere around the perimeter of the patient.

23" Top Slide with Full Table Functions & Expanded Articulating Range

The UltraSlide 3600B surgical table with 23" Top Slide (9-1/2" to head, 13-1/2" to foot) provides an impressive range of full body imaging and articulating table functions, including more power, more top slide range and 24" low table height. Patients of all sizes can be safely positioned in a greater range of C-Arm compatible orientations without repositioning or having to use transfer boards for set-up, at the Touch of a Button!



24" Low Table Height

Smooth & Responsive Top Slide Range at the Touch of a Button!



9-1/2" Slide-to-Head
for Full *Upper Body*
Imaging

13-1/2" Slide-to-Foot
for Full *Lower Body*
Imaging

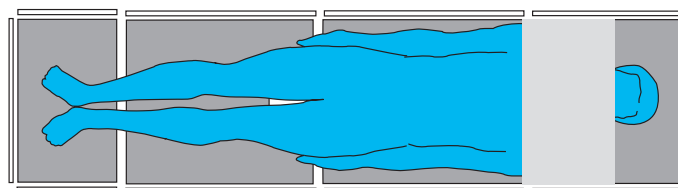
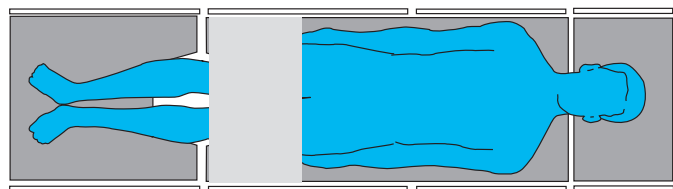
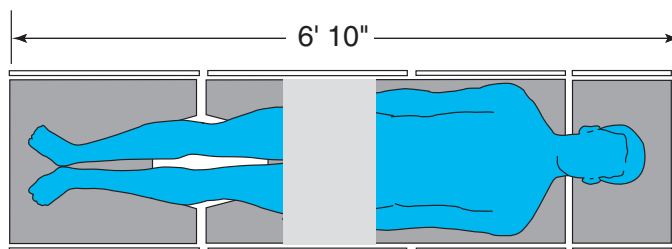


Full Upper & Lower Body Imaging *and* Positioning Capability

23" Top Slide provides Full Upper and Lower Body Imaging Capability for *Every Procedure!*

Full Body Imaging is achieved *without* having to orient the table (or patient) or add costly accessories.

A Full 23" of Top Slide permits both *Upper and Lower Body Imaging*.



Up to a 57" Imaging Window for Lower Body Procedures.

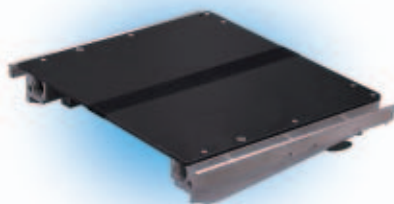
The UltraSlide 3600B Surgical Table Provides Optimal Imaging Amplification for:

- Cholangiography
- Pacemaker Insertion
- Laser Angioplasty
- Endourology
- Spinals
- Total Hip Revisions
- Endoscopy
- Lower Limb Procedures
- Neurosurgery
- Cardiovascular
- Femoral/Popliteal Bypass
- Implantable Defibrillators
- Hickman Catheters
- Shunts
- Lung Biopsies
- Laparoscopy
- Urology
- Orthopedics

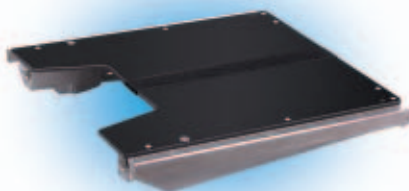
Removable Back and Leg Sections for Enhanced Imaging Flexibility



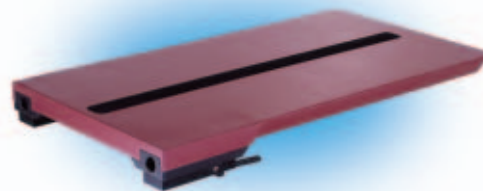
Benefits of Removable Back and Leg Sections include optimal anesthesia access for shorter patients in lithotomy position and enhanced leg room for seated surgeons. In addition, lower table heights can be more easily achieved by removing vs. lowering the leg section, thereby eliminating any articulation conflicts with the floor. Removable Back & Leg sections also permit use of the optional 36" fully carbon fiber back/leg section for obstruction free imaging for Upper and Lower Body procedures.



Removable Back Section



Removable Leg Section



36" Carbon Fiber Back/Leg Section

Speedy Set-Ups for Specialty Procedures & Auto Beach Chair Function



Removal of back section provides speedy attachment of Power Shoulder Arthroscopy Positioner. Auto Beach Chair Function takes the work out of positioning patients for shoulder arthroscopy and other Upper Body procedures.



36" Carbon Fiber Back/Leg Section

Removable Leg Section permits surgeons more leg room, lower table height positioning for Urology, Cysto/GYN and other Lower Body procedures. Optional 36" or 48" carbon fiber leg sections provide obstruction free imaging for specialty procedures such as Endovascular and more!

Feature for Feature the Most Powerful and Versa in the Industry!

1,000 lb. Lift and 800 lb. Articulating Capacity

Head section can be used as a foot extension during transfer.

Optional snap-on raised radiographic top permits fast, easy side loading of full-size X-Ray cassettes.

Radiolucent top permits clear, sharp image amplification.

Adjustable head section can be extended to accommodate taller patients.

Exclusive removable back section allows for *optional* 36" Carbon Fiber Back/Leg Section attachment and Power Beach Chair Positioner.

Built-in power kidney bridge provides an additional 5-3/4" of lift.



Return-to-Level & Automatic Beach Chair Functions

Full width quick-release bar on manually operated head section is easy to locate in emergency situations.

Durable one-touch, back-lit pendant controls all functions from any point around the perimeter of the table.

Optional Infrared (IR) Table Control Sensor.

Back-up controls for emergency situations.

Recharge port.



Battery life indicator & table base, twist-lock cord connection prevents fluid ingress.

Optional three-function foot control.

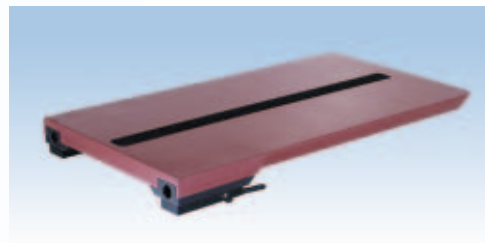


Fully mechanical brake release.

Optional Infrared (IR) Wireless Table Control

Antile Full Function, Top Slide Surgical Table

Exclusive 23" Top Slide



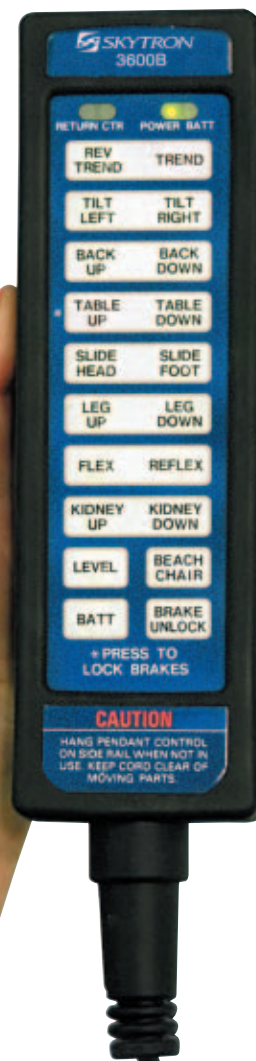
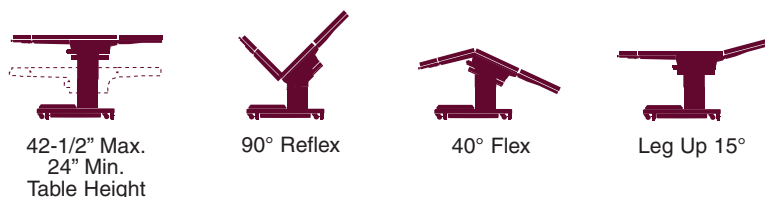
Optional 36" Carbon Fiber Back/Leg Section provides for obstruction free upper and lower body imaging.

Exclusive Removable Back & Leg Sections

Durable Back-lit, One Touch Pendant Control with Full Table Functions

It's simply the easiest pendant to use from any location around the table, with convenient back-lighting for low light procedures.

- Simple One Touch Operation
- Back-lit Control for High Visibility in Low Lighting
- Audible Alarm for Kidney Bridge / Back Up Articulation
- Anatomically Correct **Return-to-Level**
- Anatomically Correct **Beach Chair Position**
- Recessed Buttons Eliminate Accidental Activation
- Exceptionally Durable, Water Resistant
- Can be used in conjunction with *optional* Three Function Foot Control and/or Infrared (IR) Wireless Remote Control
- Pendant Rebuild Exchange Program



Optional Infrared (IR) Wireless Remote Control

UltraSlide 3600B for Bariatric Surgery



From General Purpose to Bariatric Surgery, the UltraSlide 3600B Does it All!

- 1,000 lb. Lifting Capacity, 800 lb. Articulation Capacity
- Tested to 4X the Weight Safety Factor
- 30° Patient Articulation
- 24" Low Height Adjustment
- Full Body Imaging Coverage
- Automatic 4-Point, Self-leveling Brake Safety System
- Full Line Bariatric Table Accessories

UltraSlide 3600B Bariatric Recommended Patient Positioning



Abdominal



Laparoscopic Gastric Bypass



Cysto/GYN



ENT

** C-Arm courtesy of Philips Medical Systems, Inc.*

UltraSlide 3600B Positioning Guidelines



Upper Body Imaging



Lower Body Imaging



Lap Nissen



Urology

* C-Arm courtesy of Philips Medical Systems, Inc.

UltraSlide 3600B Positioning Guidelines



Ophthalmic/ENT



Nephrectomy



Neuro (neck)



Neuro (lumbar)

UltraSlide 3600B Positioning Guidelines



Shoulder Arthroscopy



Lumbar



Orthopedic (with Traction Accessories)



Endovascular (with *optional* 48" Carbon Fiber Leg Extension)

* C-Arm courtesy of Philips Medical Systems, Inc.

UltraSlide 3600B Surgical Table Specifications

Warranty

Standard warranty covers parts and labor for two full years.

Installation/Maintenance

Installation supervision is provided. Preventive maintenance and service are available.

In-Service Training

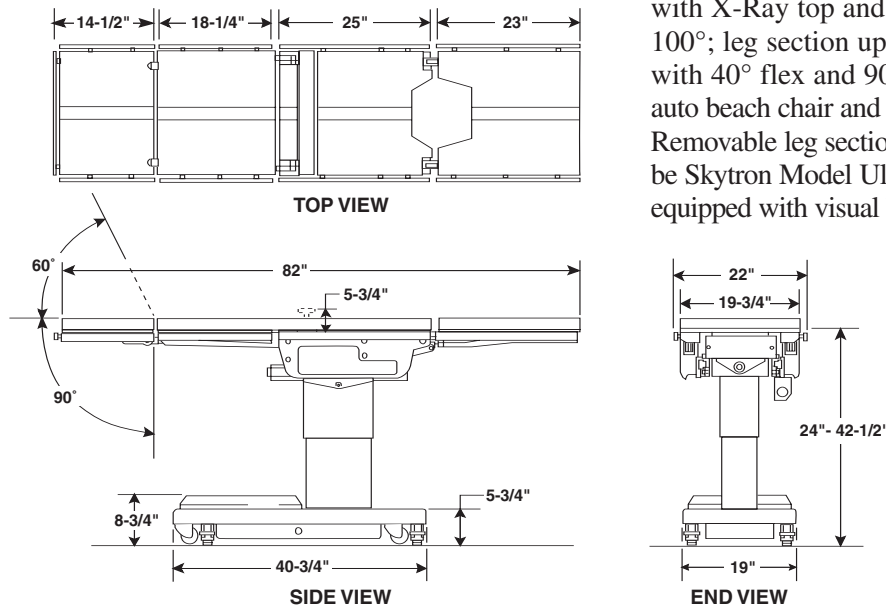
On-site surgical staff training is provided by your local Skytron representative.

Electrical Specifications

Power requirements: 120 VAC, 60Hz 300 Watts
 Current leakage: Less than 100 micro amps
 Power cord: 15 feet with hospital grade connector (removable)

Specifications

Electro-hydraulic operating room table shall operate at 120v, 60Hz, 1 phase and be protected by 15 amp circuit breaker. A removable 15-foot power cord with hospital grade plug shall be provided. Conductive casters shall allow side movement for ease of operation and cleaning. Unit is to be equipped with standardized side rails and a four-point, push-button operated braking system for safety and stability. A pendant-type control unit shall be operable from any point around the entire perimeter of the table. *Optional* wireless infrared (IR) pendant-type control is available. The table is to lift a 1,000 lb. and articulate an 800 lb. patient. Entire table top shall be radiolucent to provide image intensification capability. Positioning capabilities to include: lateral tilt of 30°; Trendelenburg and reverse Trendelenburg of 30°; kidney bridge elevation of 5-3/4"; back up of 90°; back down of 40°; height adjustment range of 24" to 42-1/2" (28" to 46-1/2" with X-Ray top and 2" pad); leg section down 100°; leg section up 15°. Unit is also provided with 40° flex and 90° reflex function control button; auto beach chair and return-to-level positions. Removable leg section and back section. Table is to be Skytron Model UltraSlide 3600B (Battery Power) equipped with visual battery life indicator.



5000 36th Street SE, Grand Rapids, MI 49512
 1-800-SKYTRON (759-8766) Fax: 616-957-5053
 E-mail: sales@skytron.us

Local Representative